

## 2.4. TECHNICAL SPECIFICATIONS

Container size	20ft
Product to be bottled	Still potable water in 0.5 L bottle
Maximum bottle dimensions	0,5 – 1.5 liter PET (max. bottle height 270mm)
Maximum production output	1300 bottles per hour for 1 liter bottle
Preform	Standard PET preform*
Closures/Caps	Plastic HDPE screw caps*
Labeling (optional)	Self-adhesive label*

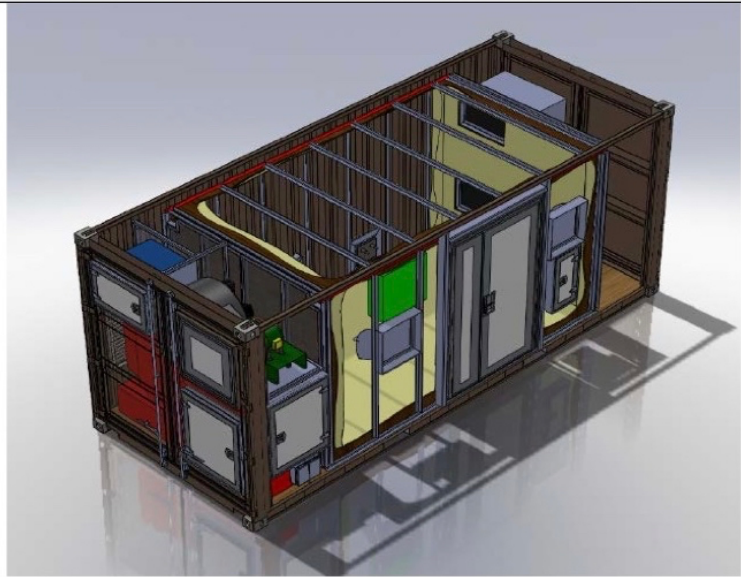
**Quality to be approved by CALA CASA INDIA PVT**

Marking (optional)	Hot foil printing or laser marking
Local working conditions (only guaranteed in combination with full A/C)	Max. temperature 40 °C Max. humidity 75 % (At altitude sea level)
All equipment / machinery:	CE-approved and from European make.
Design following:	HACCP + FDA + IBWA

Closed box system of the bottling room and no operator inside during operation.



Dedicated compartments following hygienic needs.



*Model can change depending on customer's specifications and options.*